

CONTACT INFORMATION

SAIPAN

(670) 237 - 1000 TO 1004

TINIAN

(670) 433 - 9272

ON-CALL: (670) 287 - 3268

ROTA

(670) 532 - 9333

ON-CALL: (670) 287 - 2553

JUVENILE PROBATION

(670) 237 - 1024 TO 1030

FAMILY & YOUTH ENHANCEMENT PROGRAM

(670) 237 - 1015 TO 1018

CHILD PROTECTIVE SERVICES

(670) 237 - 1005 TO 1014

ON-CALL: (670) 285 - 2780/1

EMAIL

Julian Camacho.....jrcamacho@dys.gov.mp
Benylin Mettao.....brmettao@dys.gov.mp
Quaid Ngirchongor.....qongirchongor@dys.gov.mp
Juanicia Villanueva.....jvillanueva@dys.gov.mp
Christine Aldan.....ccaldan@dys.gov.mp
Marge Mendiola.....mmendiola@dys.gov.mp
Melycher Sablan.....misablan@dys.gov.mp
Mariah Barcinas.....mbarcinas@dys.gov.mp



For more information, visit the Division of
Youth Services website at www.dys.gov.mp



DEPARTMENT OF COMMUNITY & CULTURAL AFFAIRS

DIVISION OF YOUTH SERVICES CHILD PROTECTIVE SERVICES

Physical Abuse



HOW TO MAKE A REPORT

IF YOU SUSPECT A CHILD HAS
BEEN ABUSED OR NEGLECTED,
REPORT IMMEDIATELY TO EITHER:

EMERGENCY SERVICES:

911

CHILD PROTECTIVE SERVICES:

(670) 237-1005 TO 1014

24 HOURS ON-CALL:

(670) 285-2780/1

**STOP THE
ABUSE**



*Your actions can help
a child in need.*

BUILDING #1354, CAPITOL HILL
P.O. BOX 501000 C.K., SAIPAN, MP 96950

WHAT IS PHYSICAL ABUSE?

Physical injury due to punching, beating, kicking, biting, shaking, or otherwise harming a child.



Even if a parent or caretaker did not intend to harm the child, such acts are considered abuse when done purposefully.

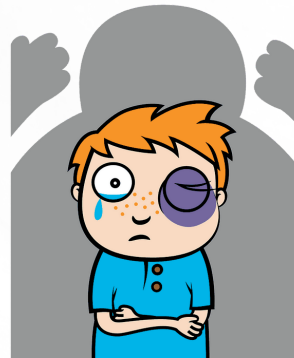


BE AWARE OF THE SIGNS

PHYSICAL SIGNS

The child may have unusual or unexplained:

- bruises, welts, cuts or other injuries (often in different stages of healing)
- broken bones
- bite marks
- burns



BEHAVIORAL SIGNS

The child may:

- wear clothing inappropriate for the weather to hide injuries
- seem withdrawn or depressed
- seem afraid to go home, or may run away from home
- shy away from physical contact
- be aggressive



6 CMC, DIV. 5 §5312. CHILD ABUSE OR NEGLECT: OFFENSE DEFINED

a) A person commits the offense of child abuse if the person:

- 1) Willfully and intentionally strikes, beats or by any other act or omission inflicts physical pain, injury or mental distress upon a child under the age of 18 who is in the person's custody, such pain or injury being clearly beyond the scope of reasonable corporal punishment, with the result that the child's physical or mental health and well-being are harmed or threatened.

CONTACT INFORMATION

HOW TO MAKE A REPORT

**IF YOU SUSPECT A CHILD HAS
BEEN ABUSED OR NEGLECTED,
REPORT IMMEDIATELY TO EITHER:**

EMERGENCY SERVICES:

911

CHILD PROTECTIVE SERVICES:

(670) 237-1005 TO 1014

24 HOURS ON-CALL:

(670) 285-2780/1



*Your actions can help
a child in need.*

SAIPAN

(670) 237 - 1000 TO 1004

TINIAN

(670) 433 - 9272

ON-CALL: (670) 287 - 3268

ROTA

(670) 532 - 9333

ON-CALL: (670) 287 - 2553

JUVENILE PROBATION

(670) 237 - 1024 TO 1030

FAMILY & YOUTH ENHANCEMENT PROGRAM

(670) 237 - 1015 TO 1018

CHILD PROTECTIVE SERVICES

(670) 237 - 1005 TO 1014

ON-CALL: (670) 285 - 2780/1

EMAIL

Julian Camacho.....jrcamacho@dys.gov.mp
Benylin Mettao.....brmettao@dys.gov.mp
Quaid Ngirchongor.....qongirchongor@dys.gov.mp
Juanicia Villanueva.....jvillanueva@dys.gov.mp
Christine Aldan.....ccaldan@dys.gov.mp
Marge Mendiola.....mmendiola@dys.gov.mp
Melycher Sablan.....misablan@dys.gov.mp
Mariah Barcinas.....mbarcinas@dys.gov.mp



*For more information, visit the Division of
Youth Services website at www.dys.gov.mp*



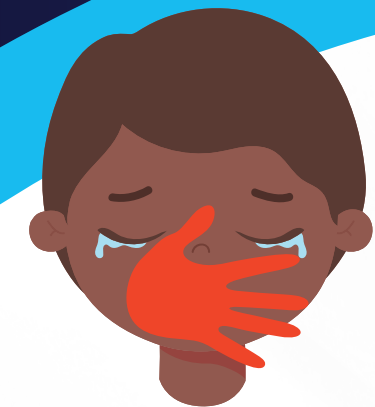
DEPARTMENT OF COMMUNITY & CULTURAL AFFAIRS

DIVISION OF YOUTH SERVICES CHILD PROTECTIVE SERVICES

Sexual Abuse



BUILDING #1354, CAPITOL HILL
P.O. BOX 501000 C.K., SAIPAN, MP 96950



WHAT IS SEXUAL ABUSE?

Any sexual contact between an adult and a child. Sexual abuse includes fondling a child's genitals, incest, penetration, rape, sodomy, indecent exposure, and commercial exploitation through prostitution or the production of pornographic materials.

Majority of victims are abused by someone they know, from friends and family members to a teacher or neighbor, making them less likely to speak up.



BE AWARE OF THE SIGNS

PHYSICAL SIGNS

The child may have:

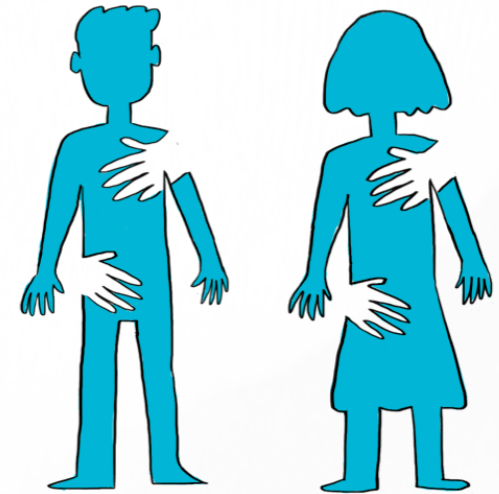
- torn, stained or bloody underwear
- trouble walking or sitting
- pain or itching in the genital area
- bruises or bleeding in the genital area
- a sexually transmitted disease
- pregnancy



BEHAVIORAL SIGNS

The child may:

- have an unusual knowledge of sex or act seductively
- shy away from physical contact
- seem withdrawn or depressed
- have self-destructive behavior
- fear a particular person



6 CMC, DIV. 5 §5312. CHILD ABUSE OR NEGLECT: OFFENSE DEFINED

a) A person commits the offense of child abuse if the person:

3) Engages in or attempts to engage in an act of sexual molestation with a child under the age of 18 who is in the person's custody.

CONTACT INFORMATION

HOW TO MAKE A REPORT

**IF YOU SUSPECT A CHILD HAS
BEEN ABUSED OR NEGLECTED,
REPORT IMMEDIATELY TO EITHER:**

EMERGENCY SERVICES:

911

CHILD PROTECTIVE SERVICES:

(670) 237-1005 TO 1014

24 HOURS ON-CALL:

(670) 285-2780/1



*Your actions can help
a child in need.*

SAIPAN
(670) 237 - 1000 TO 1004
TINIAN
(670) 433 - 9272
ON-CALL: (670) 287 - 3268
ROTA
(670) 532 - 9333
ON-CALL: (670) 287 - 2553

JUVENILE PROBATION
(670) 237 - 1024 TO 1030

FAMILY & YOUTH ENHANCEMENT PROGRAM
(670) 237 - 1015 TO 1018

CHILD PROTECTIVE SERVICES
(670) 237 - 1005 TO 1014
ON-CALL: (670) 285 - 2780/1

EMAIL

Julian Camacho.....jrcamacho@dys.gov.mp
Benylin Mettao.....brmettao@dys.gov.mp
Quaid Ngirchongor.....qongirchongor@dys.gov.mp
Juanicia Villanueva.....jvillanueva@dys.gov.mp
Christine Aldan.....ccaldan@dys.gov.mp
Marge Mendiola.....mmendiola@dys.gov.mp
Melycher Sablan.....misablan@dys.gov.mp
Mariah Barcinas.....mbarcinas@dys.gov.mp



*For more information, visit the Division of
Youth Services website at www.dys.gov.mp*



DEPARTMENT OF COMMUNITY & CULTURAL AFFAIRS

**DIVISION OF YOUTH SERVICES
CHILD PROTECTIVE SERVICES**

Emotional Abuse



**BUILDING #1354, CAPITOL HILL
P.O. BOX 501000 C.K., SAIPAN, MP 96950**

WHAT IS EMOTIONAL ABUSE?

Any pattern of behavior that harms a child's emotional development or sense of self-worth. This includes frequent belittling, rejection, threats, and withholding love, and support.



Emotional abuse can be harder to detect than other forms of child abuse. There might not be any obvious, outward signs that abuse is taking place. Sometimes, a child's behavior is the only thing that indicates that there is a problem.

BE AWARE OF THE SIGNS

PHYSICAL SIGNS

The child may have:

- exposure to domestic violence
- speech disorders
- alcohol and/or drug use
- difficulty thriving
- delayed physical development



BEHAVIORAL SIGNS

The child may:

- act too mature or too childish for his/her age
- have poor self-esteem
- have difficulty making or keeping friends
- have habit disorders; such as thumb sucking, biting, or rocking
- have destructive behaviors/extreme behavioral changes



WORDS CAN HURT

Emotional abuse can be just as harmful as physical abuse and the effects can last a lifetime.



Like other forms of abuse, emotional abuse is about power and control. The perpetrator manipulates and controls the child by using words and actions that are emotionally hurtful and damaging.

CONTACT INFORMATION

HOW TO MAKE A REPORT

**IF YOU SUSPECT A CHILD HAS
BEEN ABUSED OR NEGLECTED,
REPORT IMMEDIATELY TO EITHER:**

EMERGENCY SERVICES:

911

CHILD PROTECTIVE SERVICES:

(670) 237-1005 TO 1014

24 HOURS ON-CALL:

(670) 285-2780/1

**STOP THE
ABUSE**



*Your actions can help
a child in need.*

SAIPAN

(670) 237 - 1000 TO 1004

TINIAN

(670) 433 - 9272

ON-CALL: (670) 287 - 3268

ROTA

(670) 532 - 9333

ON-CALL: (670) 287 - 2553

JUVENILE PROBATION

(670) 237 - 1024 TO 1030

FAMILY & YOUTH ENHANCEMENT PROGRAM

(670) 237 - 1015 TO 1018

CHILD PROTECTIVE SERVICES

(670) 237 - 1005 TO 1014

ON-CALL: (670) 285 - 2780/1

EMAIL

Julian Camacho.....jrcamacho@dys.gov.mp
Benylin Mettao.....brmettao@dys.gov.mp
Quaid Ngirchongor.....qongirchongor@dys.gov.mp
Juanicia Villanueva.....jvillanueva@dys.gov.mp
Christine Aldan.....ccaldan@dys.gov.mp
Marge Mendiola.....mmendiola@dys.gov.mp
Melycher Sablan.....misablan@dys.gov.mp
Mariah Barcinas.....mbarcinas@dys.gov.mp



*For more information, visit the Division of
Youth Services website at www.dys.gov.mp*



DEPARTMENT OF COMMUNITY & CULTURAL AFFAIRS

DIVISION OF YOUTH SERVICES CHILD PROTECTIVE SERVICES

Neglect



**BUILDING #1354, CAPITOL HILL
P.O. BOX 501000 C.K., SAIPAN, MP 96950**

WHAT IS NEGLECT?

Failure to provide for a child's basic needs (physical, emotional, medical and educational).



FOUR AREAS OF NEGLECT

PHYSICAL NEGLECT

Physical Indicators:

- Abandonment
- Underweight, poor growth pattern
- Poor hygiene
- Lack of supervision at home
- Lack of food, clothing, and shelter
- Lack of health care

Behavior Indicators:

- Inappropriate seeking of affection
- Assuming adult responsibilities & concerns
- Frequently tired or hungry
- Stealing food

EMOTIONAL NEGLECT

Indicators:

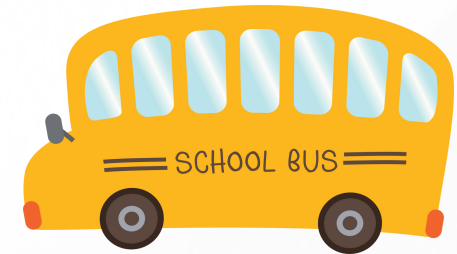
- Ignoring (consistent failure to respond to the child's need for stimulation, nurturance, encouragement, and protection or failure to acknowledge the child's presence)
- Rejecting (actively refusing to respond to the child's needs [e.g., refusing to show affection])
- Terrorizing (threatening the child with extreme punishment or creating a climate of terror by playing on childhood fears)



EDUCATIONAL NEGLECT

Indicators:

- Failure to enroll mandatory school-aged child (5-17 yrs. old)
- Chronic truancy



6 CMC, DIV. 5 §5312. CHILD ABUSE OR NEGLECT: OFFENSE DEFINED

a) A person commits the offense of child abuse if the person:

2) Through willful negligent act or omission fails to provide a child under the age of 18 who is in the person's custody with adequate supervision, medical care, food, clothing or shelter with the result that the child's physical or mental health and well-being are harmed or threatened.

